

NISP Daily Elliott Wave Research

11 October 2018

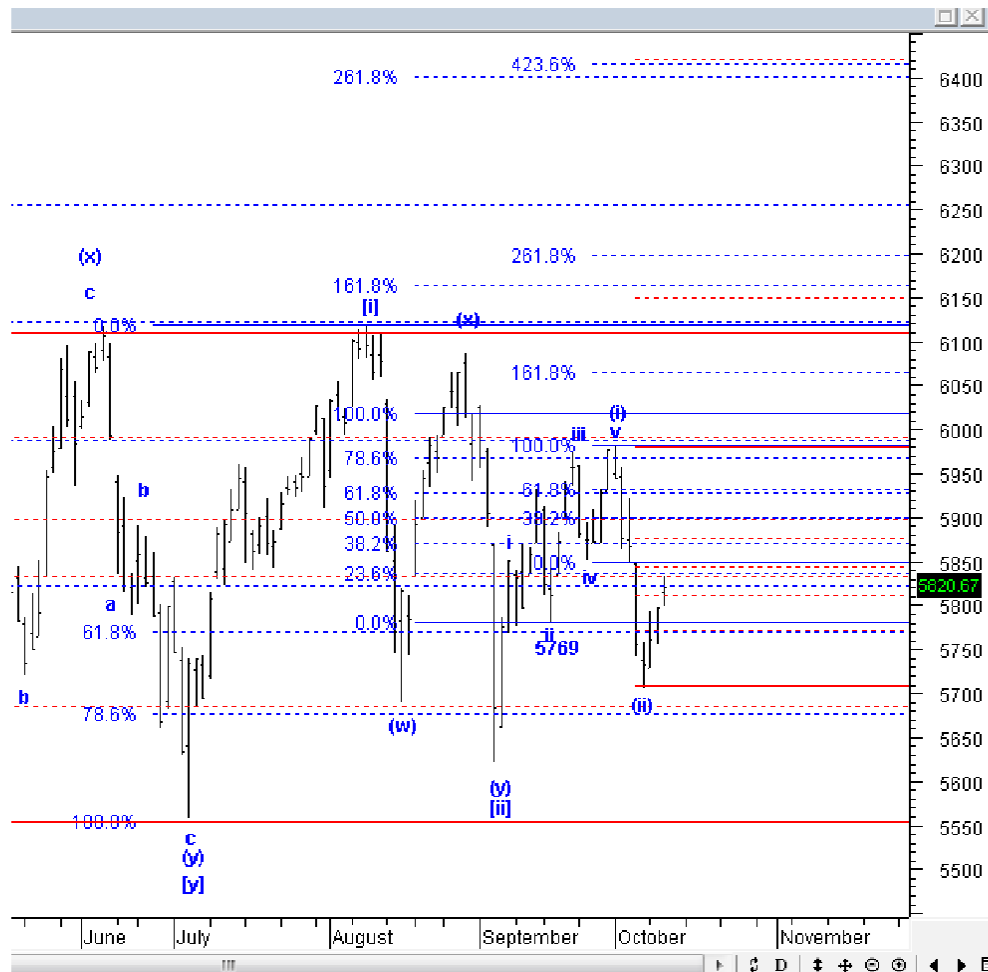


Elliottician Overview

- Jakarta Composite Index *Elliott Wave Perspective*
 - *Short Term View (1-2 days): Bullish*
- *Stocks Recommendation for Today*
 - **GJTL**; *Buy on weakness – Buy area 635-640; TP 720, 765; SL 610*
 - **AAI**; *Buy on weakness - Buy area 11400-11600;TP 12400, 13000, 14000; SL 11300*
 - **SMCB**; *Sell on strength; Sell area 1280-1300; Downside target 900, 850*
 - **HOKI**; *Sell on strength; Sell area 845-850; Downside target 730-750*
 - **WOOD**; *Sell on strength; Sell area 595-600; Downside target 510, 470, 420*

Jakarta Composite Index

Elliott Wave Perspective

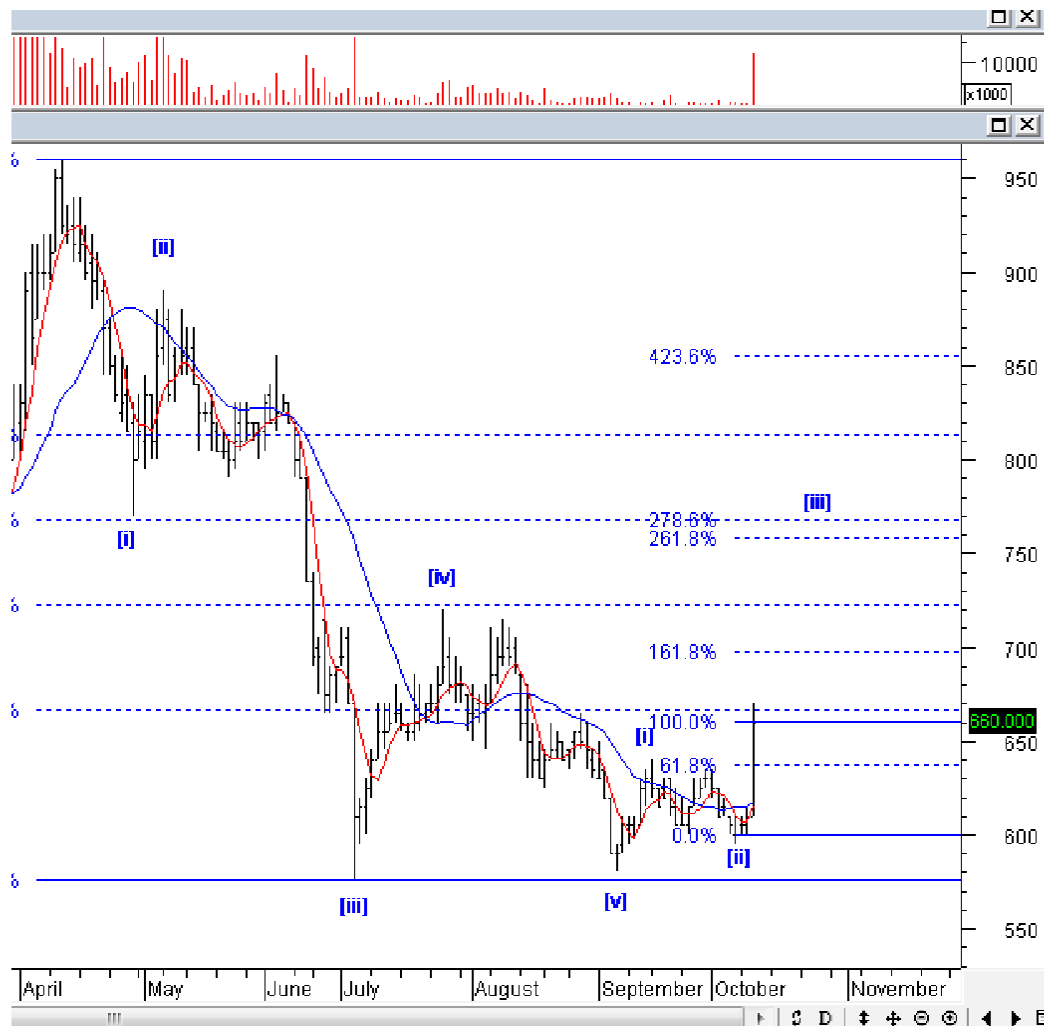


IHSG kemarin ditutup di level 5820, dengan *highest* di level 5832. Artinya, target ideal kenaikan IHSG sudah tercapai, hari ini IHSG rawan kembali terkoreksi setidaknya ke level 5770-5750, tetapi kami melihat, selama IHSG tidak turun ke bawah 5706, IHSG masih ada peluang untuk kembali melanjutkan kenaikannya menuju level 5900-6000 lagi.

Support : 5770, 5750, 5670-5685
Resisten : 5830-5850, 5900

Stock Recommendation for Today

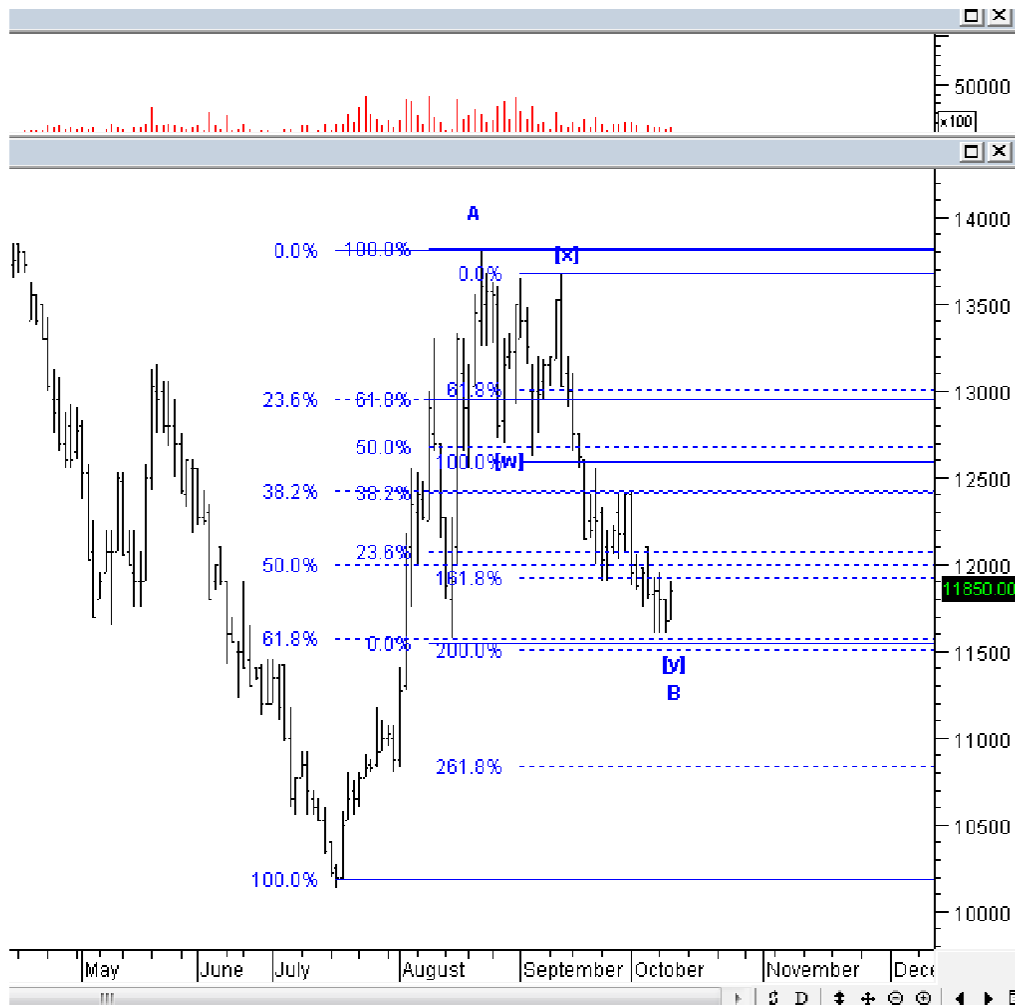
GJTL: *Buy on weakness – Buy area 635-640; TP 720, 765; SL 610*



GJTL kemarin menguat agresif, dan ini mengkonfirmasi bahwa GJTL sudah berada di *wave* [iii]. Silakan BoW GJTL jika hari ini turun ke area beli kami.

Stock Recommendation for Today

AALI: Buy on weakness - Buy area 11400-11600; TP 12400, 13000, 14000; SL 11300



AALI harusnya sudah berada di akhir wave [y] dari wave B. Silakan BoW atau menambah posisi pada AALI.

Stock Recommendation for Today

SMCB: *Sell on strength; Sell area 1280-1300; Downside target 900, 850*



SMCB memang kemarin naik agresif dengan *blow-off volume*, tetapi ketika ada *blow-off volume* pada saat harga sudah di atas dan *break new high*, ini menunjukkan biasanya bahwa *uptrend* akan segera berakhir. SMCB saat ini berada di *wave 5*, yang artinya memang SMCB harus turun lagi setidaknya ke level 850-900, silakan SOS dan hindari SMCB terlebih dahulu.

Stock Recommendation for Today

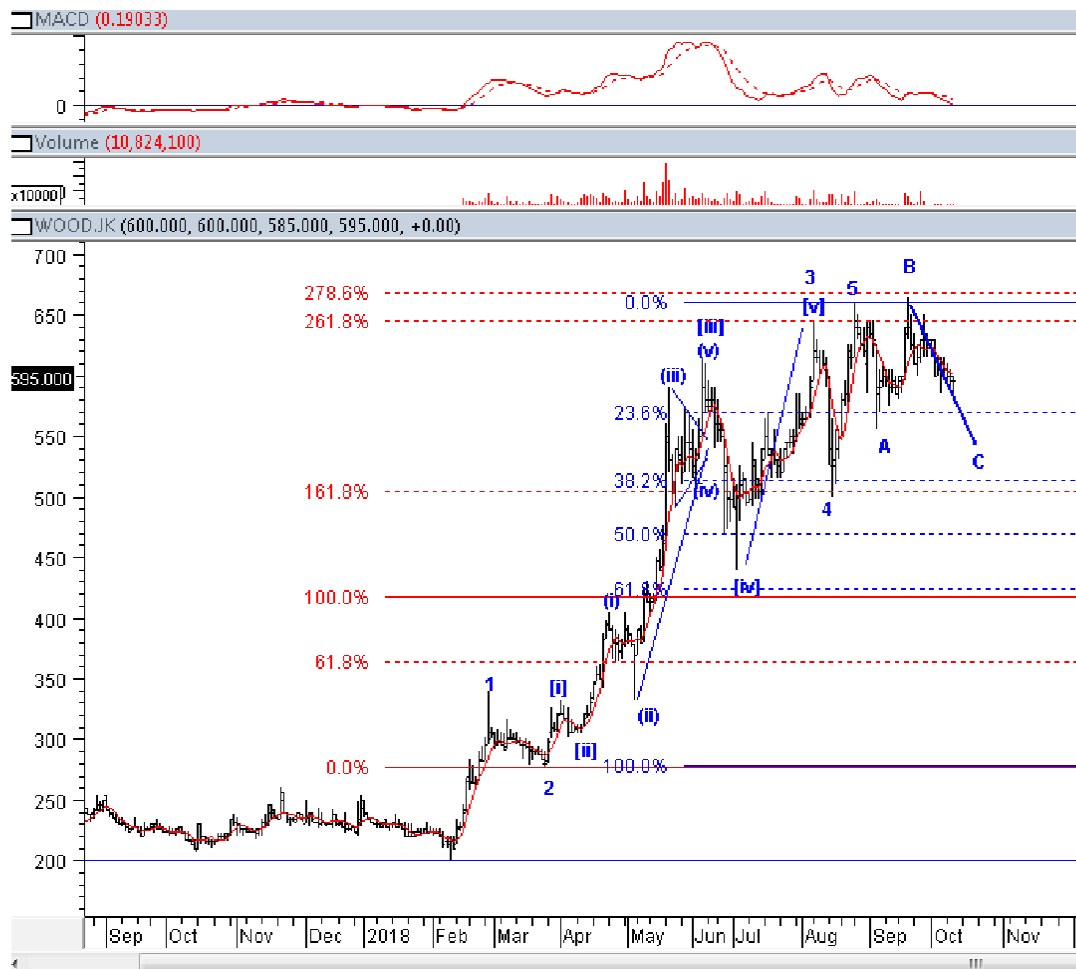
HOKI: *Sell on strength; Sell area 845-850; Downside target 730-750*



HOKI masih kami rekomendasikan SoS, dan skenario belum berubah, karena HOKI masih berada di pertengahan wave {C}.

Stock Recommendation for Today

WOOD: *Sell on strength; Sell area 595-600; Downside target 510, 470, 420*



WOOD masih kami rekomendasikan SoS, mengingat target koreksi wave C belum tercapai. Hindari WOOD terlebih dahulu.

PT NISP Sekuritas
OCBC NISP Tower Lt. 21 (Head Office)
Jl. Prof. Dr. Satrio Kav. 25
Jakarta 12940 Indonesia
Phone. (021) 2935 2788 (hunting)
Fax. (021) 5794 4095
Email: info@nispsekuritas.com
Website: www.nispsekuritas.com

Branches	Address	Phone:	Fax:
Pluit Jakarta	Ruko Sentra Bisnis Blok C28 Jl. Pluit Sakti Raya No. 15 Jakarta Utara 14450	(021) 6667 5050 (hunting)	(021) 6667 5051

Rating Definitions

- Buy on Weakness (BoW) : We expect this stock could be bought below the last price.
Trading Buy : We expect this stock could be bought at the last price.
Sell on Strength (SoS) : We expect this stock could be sold above the last price.
Trading Sell : We expect this stock could be sold at the last price.

DISCLAIMER

This report was produced by PT NISP Sekuritas, a member of the Indonesia Stock Exchange (IDX). The Information contained in this report has been obtained from public sources believed to be reliable and the options, analysis, forecasts, projections and expectations contained in this report are based on such information and are expressions of belief only. No representation or warranty, express or implied, is made that such information or opinion is accurate, complete or verified and it should not be relied upon as such. This report is provided solely for the information of clients of PT NISP Sekuritas who has to make their own investment decisions without reliance on this report. Neither PT NISP Sekuritas nor any officer or employee of PT NISP Sekuritas accept any liability whatsoever for any direct or consequential loss arising from any use of this report or its contents. PT NISP Sekuritas may be involved in transactions contrary to any opinions herein to make markets, or have positions in the securities recommended herein. PT NISP Sekuritas may seek or will seek investment banking or other business relationships with the companies within this report. This report is a copyright of PT NISP Sekuritas. For further information please contact our number 62-21-29352788 or fax 62-21-57944095.