

NISP Daily Elliott Wave Research

7 September 2018

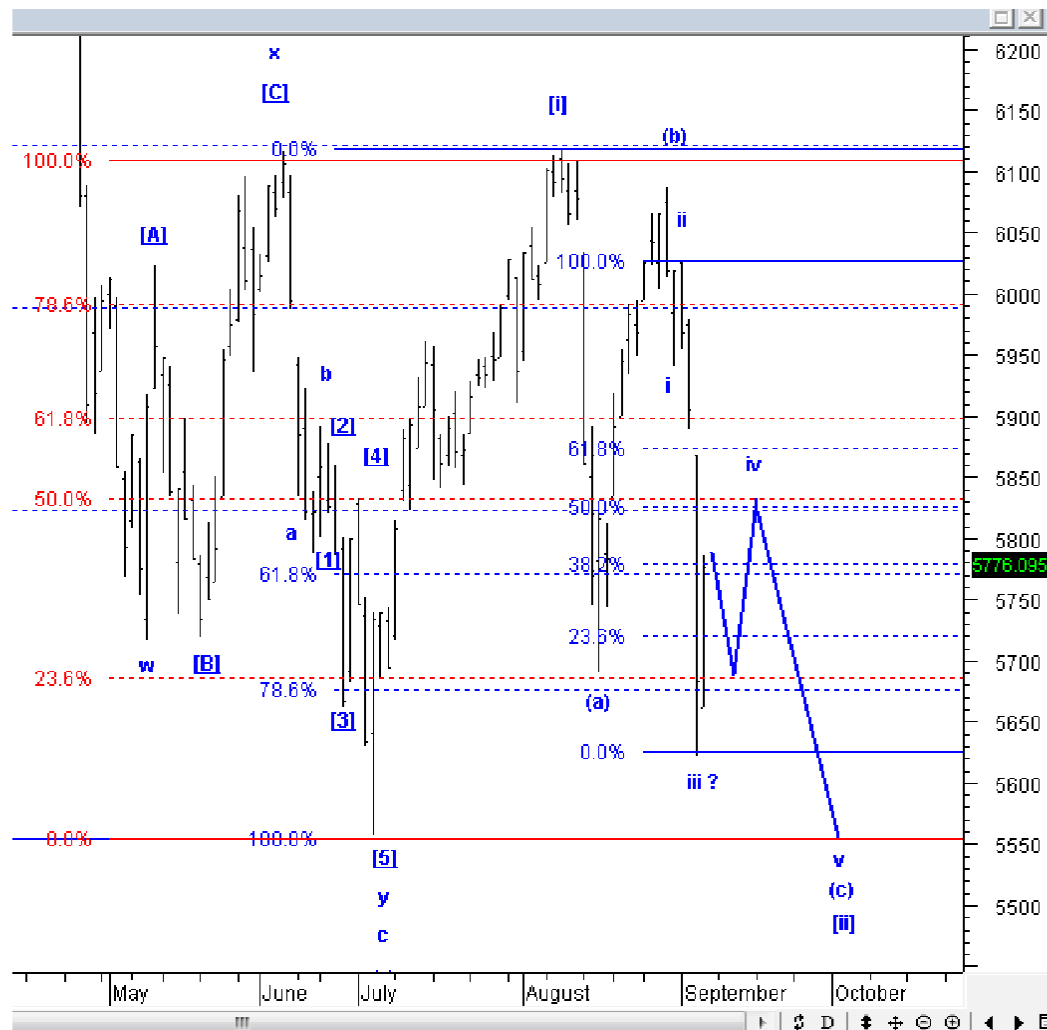


Elliottician Overview

- Jakarta Composite Index *Elliott Wave Perspective*
 - *Short Term View (1-2 days): Bullish*
- *Stocks Recommendation for Today*
 - **TLKM**; *Buy on weakness – Buy area 3300-3350; TP 3460, 3600, 3880; SL 3250*
 - **CPIN**; *Buy on weakness – Buy area 4760-4820; TP 5100, 5400, 5600; SL 4600*
 - **ADRO**; *Buy on weakness – Buy area 1700-1720; TP 1940, 2100; SL 1650*
 - **KLBF**; *Buy on weakness – Buy area 1180-1210; TP 1260, 1300, 1350; SL 1150*
 - **ERAA**; *Sell on strength; Sell area 2400-2450; Downside target 1950-1980*

Jakarta Composite Index

Elliott Wave Perspective



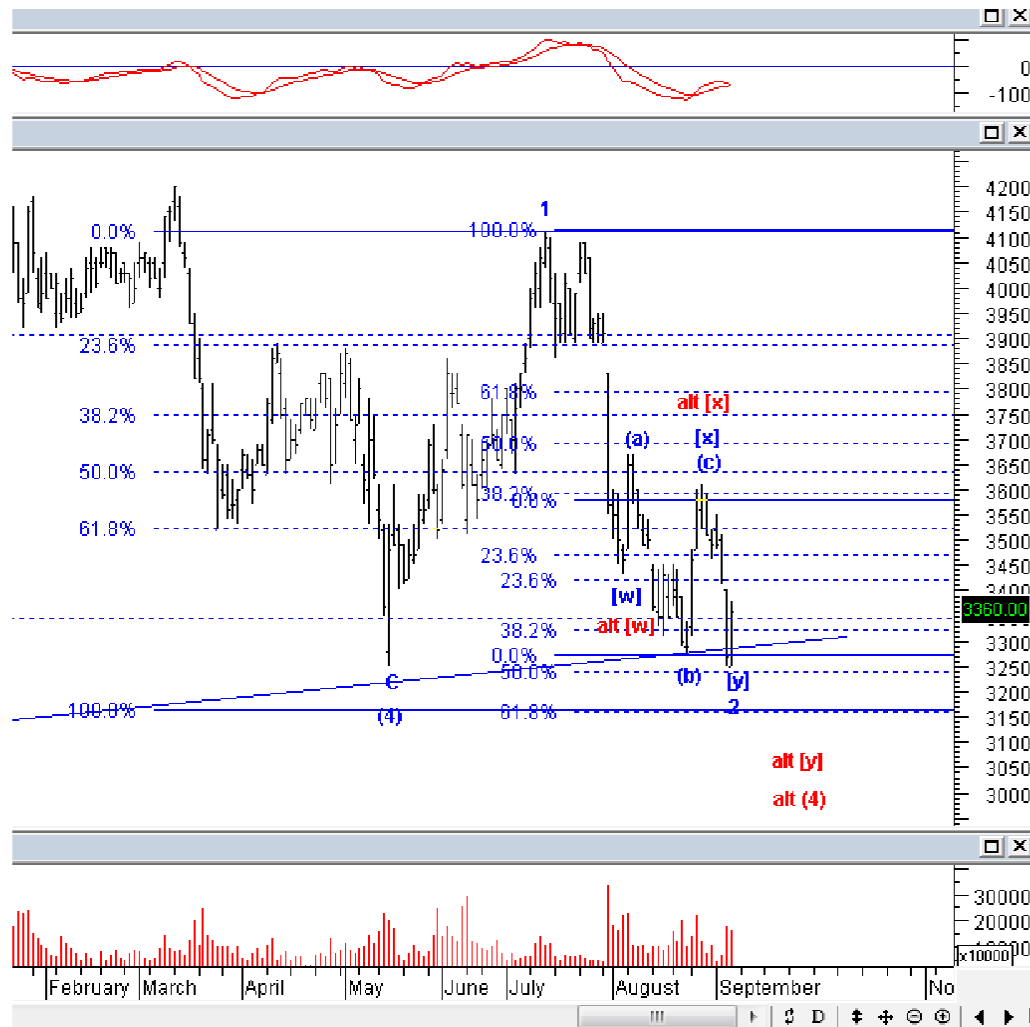
IHSG kemarin memang menguat agresif, hanya saja, selama IHSG belum mampu *break* 5940, IHSG masih harus diasumsikan sedang berada di *wave* iv, yang artinya *rebound* IHSG ini hanya sementara, dan IHSG rawan untuk turun lagi ke bawah 5681 lagi. Ada baiknya, menggunakan naiknya IHSG hari ini untuk SoS atau *profit taking* saham yang dibeli kemarin lusa.

Support : 5718, 5681, 5600, 5557

Resisten : 5817, 5940, 5985, 6100, 6117

Stock Recommendation for Today

TLKM: Buy on weakness – Buy area 3300-3350; TP 3460, 3600, 3880; SL 3250



TLKM kemarin menguat dengan volume yang membesar, tampaknya TLKM sudah berada di akhir wave 2. Silakan BoW TLKM, dan batasi resiko jika TLKM ditutup di bawah 3250, yang artinya TLKM rawan untuk menuju 2900-3000 jika sampai turun ke bawah 3250.

Stock Recommendation for Today

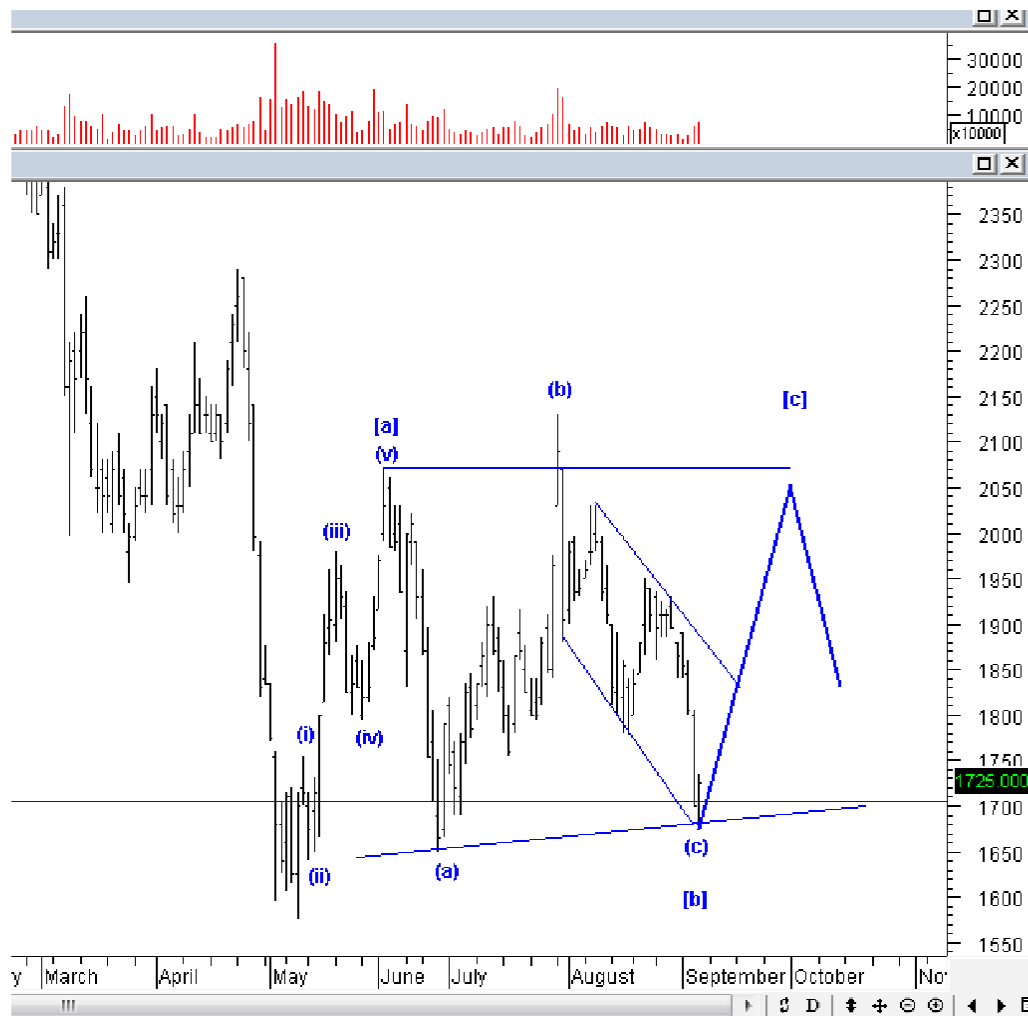
CPIN: *Buy on weakness – Buy area 4760-4820; TP 5100, 5400, 5600; SL 4600*



CPIN masih kami rekomendasikan beli, karena CPIN seharusnya sudah konfirm selesai membentuk wave (iv), dan saat ini sedang berada di wave (v). Silakan BoW CPIN.

Stock Recommendation for Today

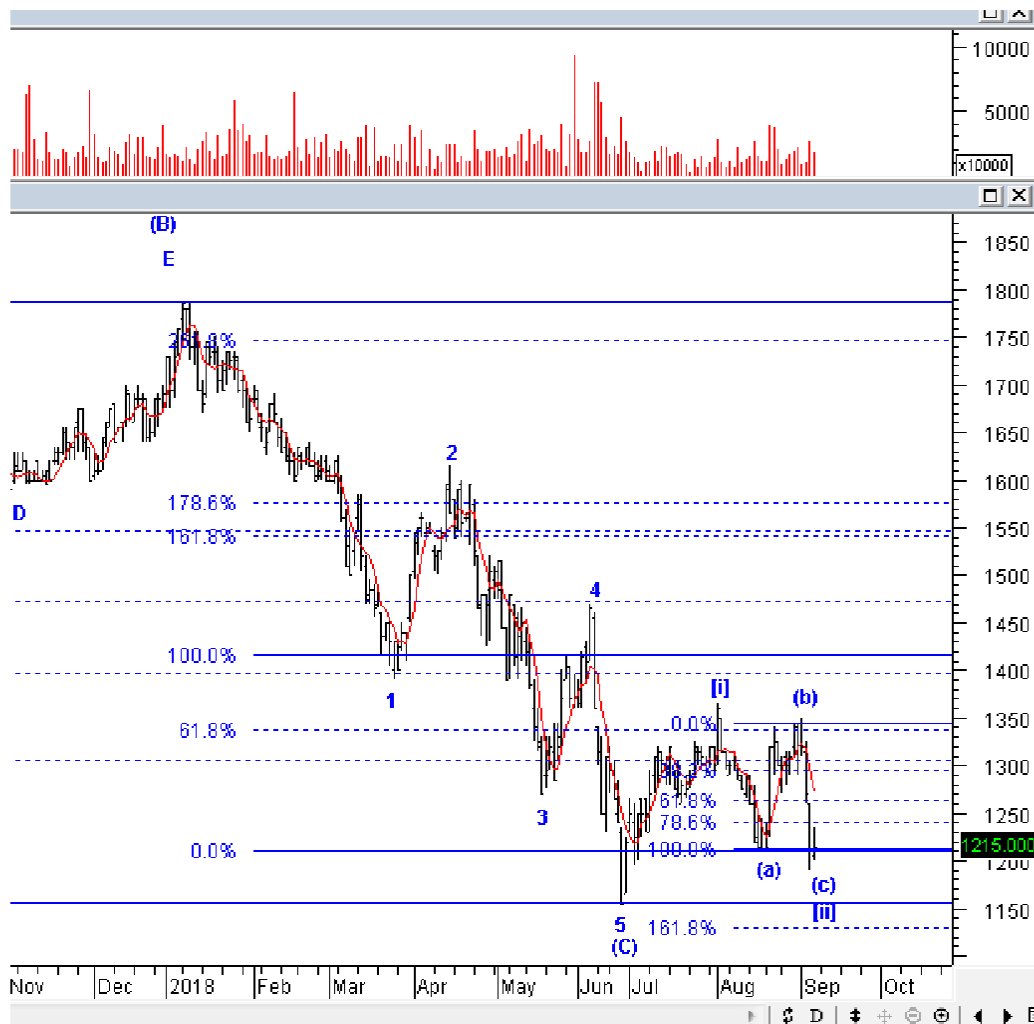
ADRO: *Buy on weakness – Buy area 1700-1720; TP 1940, 2100; SL 1650*



Koreksi yang terjadi pada ADRO kemarin rupanya menjadi bagian dari wave (c) dari wave [b], artinya ADRO berpotensi untuk masih menguat. Meskipun begitu, karena masih minim konfirmasi, batasi resiko dengan menjaga ketat level *stoplossnya*.

Stock Recommendation for Today

KLBF: *Buy on weakness – Buy area 1180-1210; TP 1260, 1300, 1350; SL 1150*



KLBF saat ini sedang berada di *wave* (c) dari *wave* [ii], manfaatkan koreksi untuk BoW KLBF, dan jaga ketat level *stoplossnya*.

Stock Recommendation for Today

ERAA: *Sell on strength; Sell area 2400-2450; Downside target 1950-1980*



ERAA saat ini sedang membentuk wave [iv]. Sehingga rebound yang terjadi sejak kemarin sifatnya sementara, dan ERAA masih rawan terkoreksi ke bawah 2000. Kami masih rekomendasikan SoS ERAA.

PT NISP Sekuritas
OCBC NISP Tower Lt. 21 (Head Office)
Jl. Prof. Dr. Satrio Kav. 25
Jakarta 12940 Indonesia
Phone. (021) 2935 2788 (hunting)
Fax. (021) 5794 4095
Email: info@nispsekuritas.com
Website: www.nispsekuritas.com

Branches	Address	Phone:	Fax:
Pluit Jakarta	Ruko Sentra Bisnis Blok C28 Jl. Pluit Sakti Raya No. 15 Jakarta Utara 14450	(021) 6667 5050 (hunting)	(021) 6667 5051

Rating Definitions

Buy on Weakness (BoW) : We expect this stock could be bought below the last price.
Trading Buy : We expect this stock could be bought at the last price.
Sell on Strength (SoS) : We expect this stock could be sold above the last price.
Trading Sell : We expect this stock could be sold at the last price.

DISCLAIMER

This report was produced by PT NISP Sekuritas, a member of the Indonesia Stock Exchange (IDX). The Information contained in this report has been obtained from public sources believed to be reliable and the options, analysis, forecasts, projections and expectations contained in this report are based on such information and are expressions of belief only. No representation or warranty, express or implied, is made that such information or opinion is accurate, complete or verified and it should not be relied upon as such. This report is provided solely for the information of clients of PT NISP Sekuritas who has to make their own investment decisions without reliance on this report. Neither PT NISP Sekuritas nor any officer or employee of PT NISP Sekuritas accept any liability whatsoever for any direct or consequential loss arising from any use of this report or its contents. PT NISP Sekuritas may be involved in transactions contrary to any opinions herein to make markets, or have positions in the securities recommended herein. PT NISP Sekuritas may seek or will seek investment banking or other business relationships with the companies within this report. This report is a copyright of PT NISP Sekuritas. For further information please contact our number 62-21-29352788 or fax 62-21-57944095.