

NISP Daily Elliott Wave Research

6 September 2018

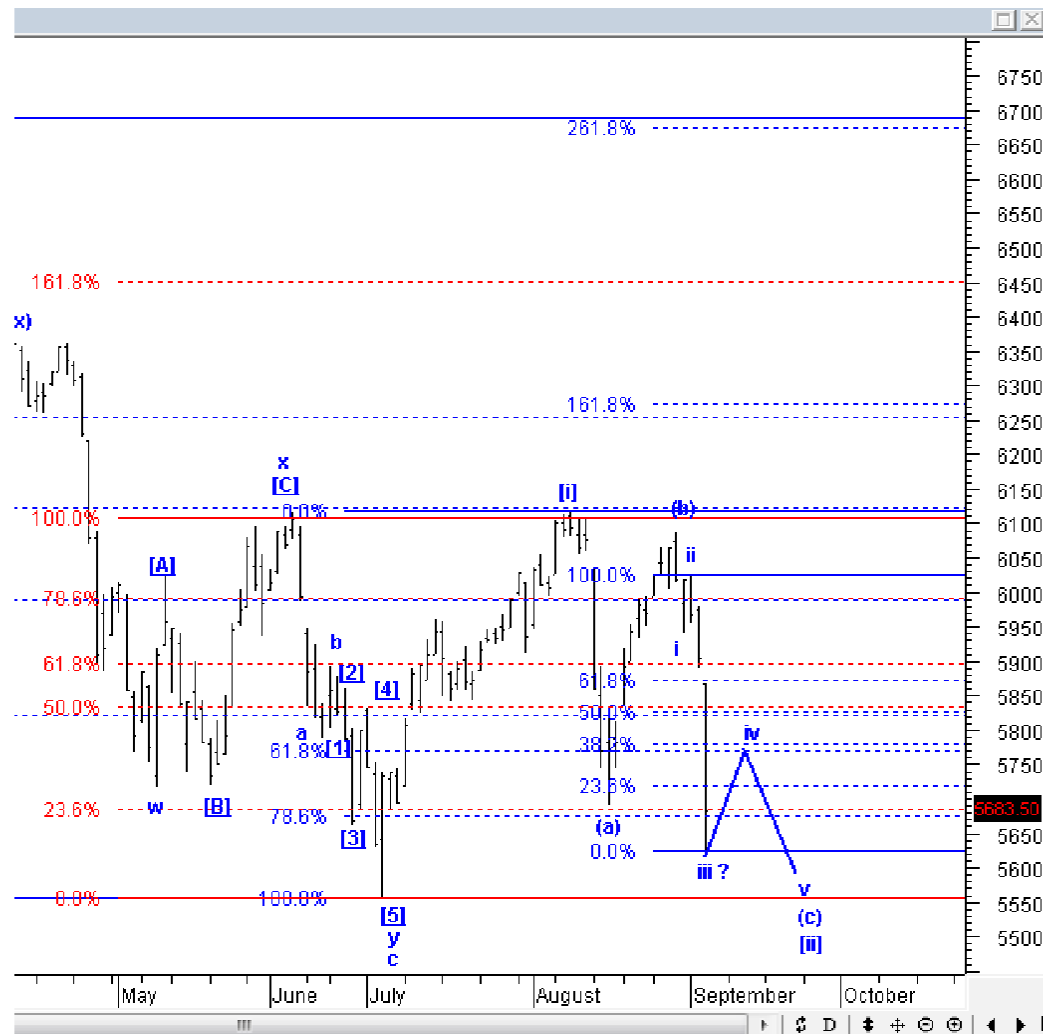


Elliottician Overview

- Jakarta Composite Index *Elliott Wave Perspective*
 - *Short Term View (1-2 days): Bullish*
- *Stocks Recommendation for Today*
 - **PGAS**; *Buy on weakness – Buy area 1780-1850; TP 1980, 2020, 2120; SL 1750*
 - **BBTN**; *Buy on weakness – Buy area 2200-2300; TP 2600, 2770, 3000; SL 2180*
 - **AGRO**; *Buy on weakness – Buy area 320-332; TP 404, 448; SL 310*
 - **LSIP**; *Sell on strength – Sell area 1330-1350; Downside target 1220, 1160*
 - **UNVR**; *Sell at any price; Downside target 39500, 39000, 37300*

Jakarta Composite Index

Elliott Wave Perspective



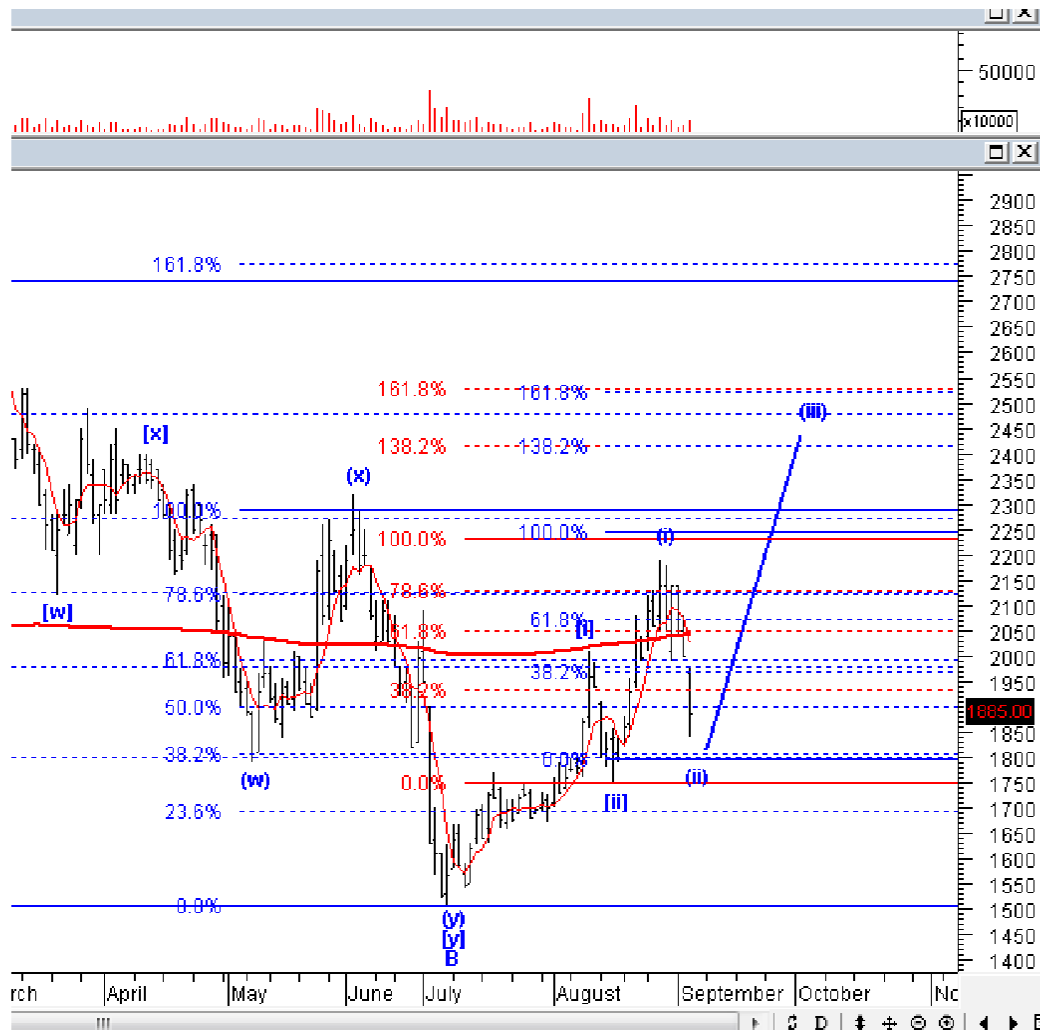
IHSG kemarin terkoreksi agresif, yang mana ini mengkonfirmasi bahwa skenario utama kami gagal, dan IHSG saat ini berada di skenario alternatif. Arah IHSG untuk *midterm* masih *ontrack*, yaitu masih *uptrend*, selama IHSG tidak turun ke bawah 5557, hanya saja, untuk jangka pendek hingga awal minggu depan, IHSG rawan terkoreksi menuju 5560-5600. Posisi saat ini sedang berada di *wave iv* dari *wave (c)* dari *wave [ii]*, sehingga, pagi ini, IHSG masih rawan untuk terkoreksi lagi, meskipun relatif terbatas dibandingkan kemarin.

Support : 5600, 5557

Resisten : 577-, 5985, 6100, 6117

Stock Recommendation for Today

PGAS: *Buy on weakness – Buy area 1780-1850; TP 1980, 2020, 2120; SL 1750*



PGAS masih kami rekomendasikan beli, meskipun level *stoploss* sempat tersentuh, bagi yang sudah exit, kami rekomendasikan untuk *buyback*, karena PGAS saat ini masih berada di *wave* (ii), dan ini masih *ontrack* selama PGAS tidak turun ke bawah 1750. Silakan BoW PGAS lagi, dan batasi resiko jika PGAS turun ke bawah 1750.

Stock Recommendation for Today

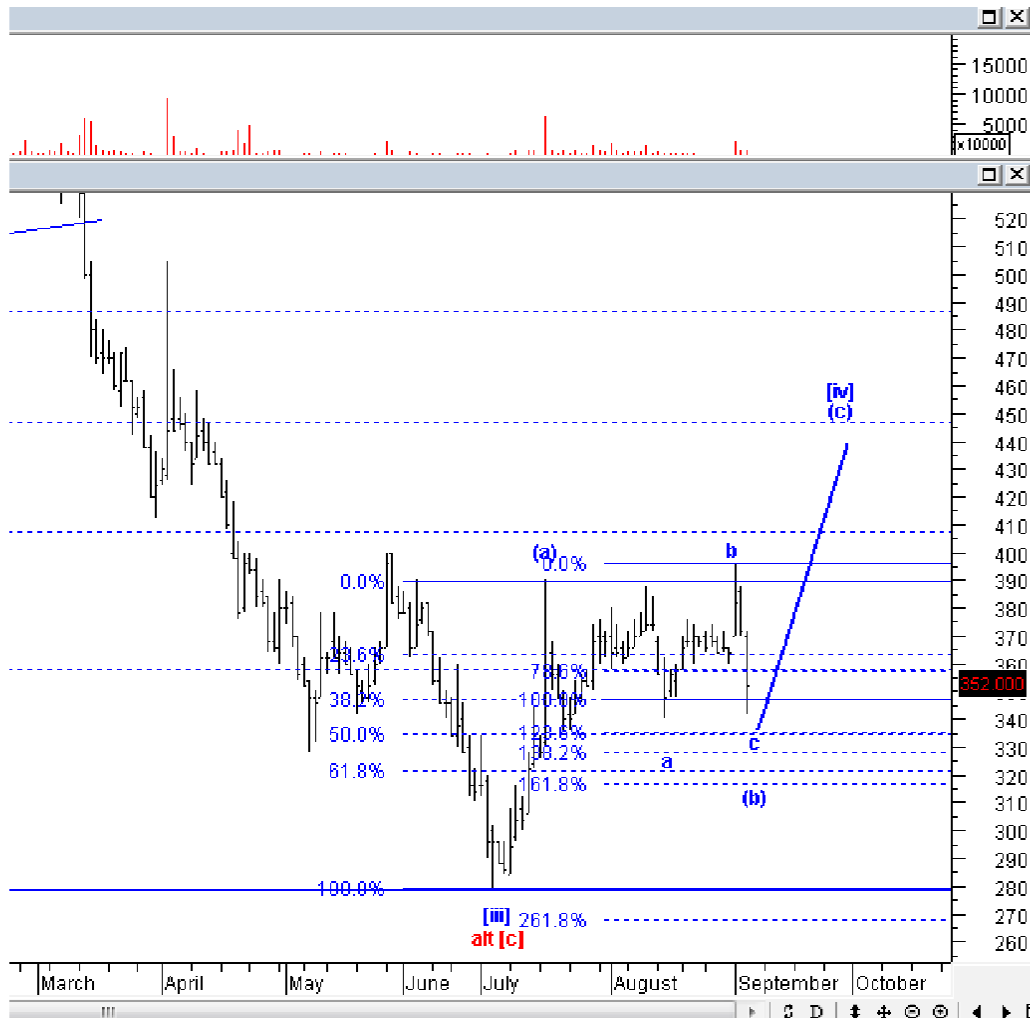
BBTN: *Buy on weakness – Buy area 2200-2300; TP 2600, 2770, 3000; SL 2180*



BBTN meskipun skenario utama sudah berubah, tetapi kami melihat bahwa BBTN masih *ontrack* berada di akhir koreksi untuk jangka pendek, artinya BBTN sudah berada di akhir *wave [c]* dari B, silakan *BoW* atau *buyback* BBTN lagi jika BBTN turun ke bawah 2300.

Stock Recommendation for Today

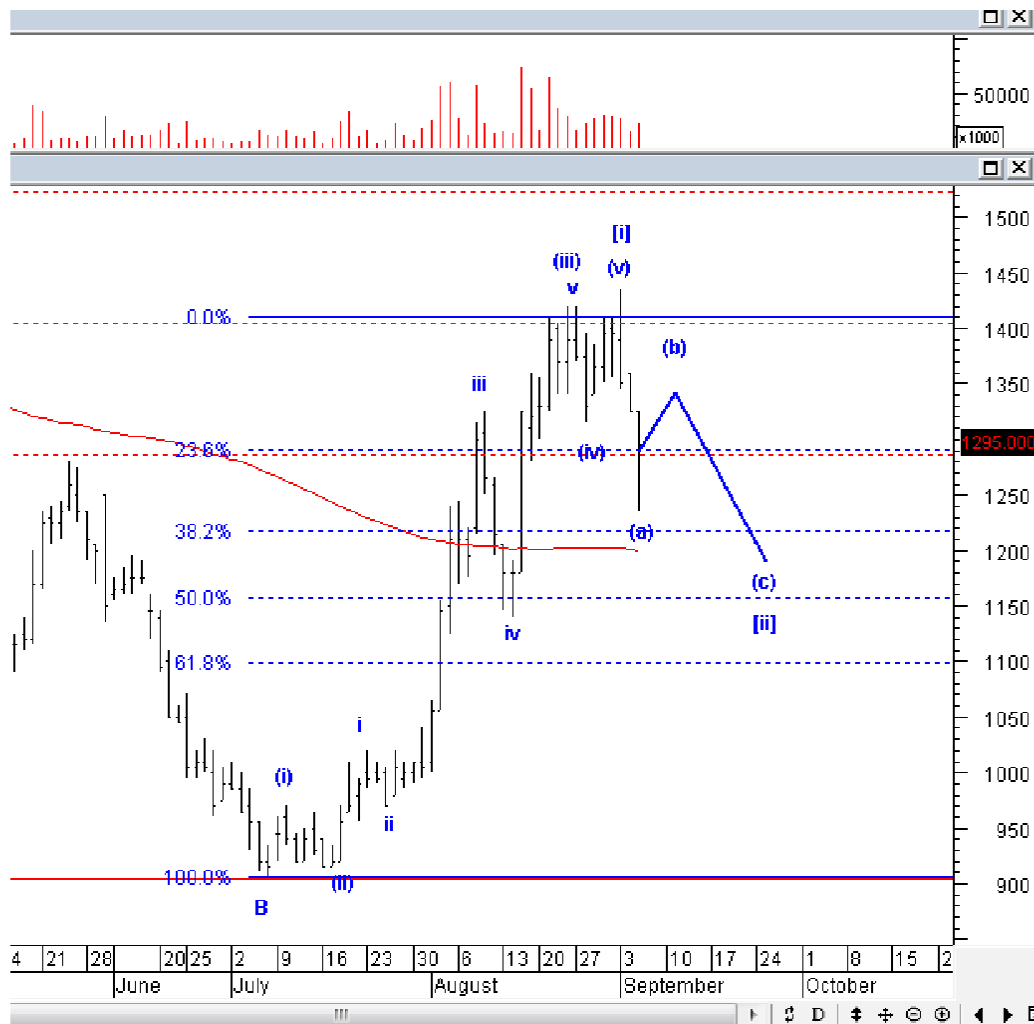
AGRO: Buy on weakness – Buy area 320-332; TP 404, 448; SL 310



Koreksi yang terjadi pada AGRO adalah koreksi minor pada wave c dari wave (b). Bagi yang sudah keluar AGRO, kami tetap rekomendasikan untuk *buyback* terutama jika AGRO turun ke bawah 334.

Stock Recommendation for Today

LSIP: *Sell on strength – Sell area 1330-1350; Downside target 1220, 1160*



Kami masih rekomendasikan SOS LSIP, karena kemarin LSIP membentuk *hammer*, yang berarti harusnya 1-2 hari ini LSIP akan naik ke atas 1320 untuk menyelesaikan *wave* (b). Silakan SoS LSIP, dan *buyback* ketika LSIP sudah mencapai target koreksinya.

Stock Recommendation for Today

UNVR: *Sell at anyprice; Downside target 39500, 39000, 37300*



Kami melihat bahwa UNVR akan menjadi salah satu saham yang mendorong koreksi IHSG lebih dalam nantinya, karena posisi UNVR berada di *wave (a)* dari *wave [v]* dari *wave C* pada pola *ending diagonal*. Kami sarankan untuk menjual UNVR di harga berapapun, dan lakukan *buyback* ketika UNVR sudah turun ke bawah 38000.

PT NISP Sekuritas
OCBC NISP Tower Lt. 21 (Head Office)
Jl. Prof. Dr. Satrio Kav. 25
Jakarta 12940 Indonesia
Phone. (021) 2935 2788 (hunting)
Fax. (021) 5794 4095
Email: info@nispsekuritas.com
Website: www.nispsekuritas.com

Branches	Address	Phone:	Fax:
Pluit Jakarta	Ruko Sentra Bisnis Blok C28 Jl. Pluit Sakti Raya No. 15 Jakarta Utara 14450	(021) 6667 5050 (hunting)	(021) 6667 5051

Rating Definitions

- Buy on Weakness (BoW) : We expect this stock could be bought below the last price.
Trading Buy : We expect this stock could be bought at the last price.
Sell on Strength (SoS) : We expect this stock could be sold above the last price.
Trading Sell : We expect this stock could be sold at the last price.

DISCLAIMER

This report was produced by PT NISP Sekuritas, a member of the Indonesia Stock Exchange (IDX). The Information contained in this report has been obtained from public sources believed to be reliable and the options, analysis, forecasts, projections and expectations contained in this report are based on such information and are expressions of belief only. No representation or warranty, express or implied, is made that such information or opinion is accurate, complete or verified and it should not be relied upon as such. This report is provided solely for the information of clients of PT NISP Sekuritas who has to make their own investment decisions without reliance on this report. Neither PT NISP Sekuritas nor any officer or employee of PT NISP Sekuritas accept any liability whatsoever for any direct or consequential loss arising from any use of this report or its contents. PT NISP Sekuritas may be involved in transactions contrary to any opinions herein to make markets, or have positions in the securities recommended herein. PT NISP Sekuritas may seek or will seek investment banking or other business relationships with the companies within this report. This report is a copyright of PT NISP Sekuritas. For further information please contact our number 62-21-29352788 or fax 62-21-57944095.