

# ***NISP Daily Elliott Wave Research***

5 September 2018

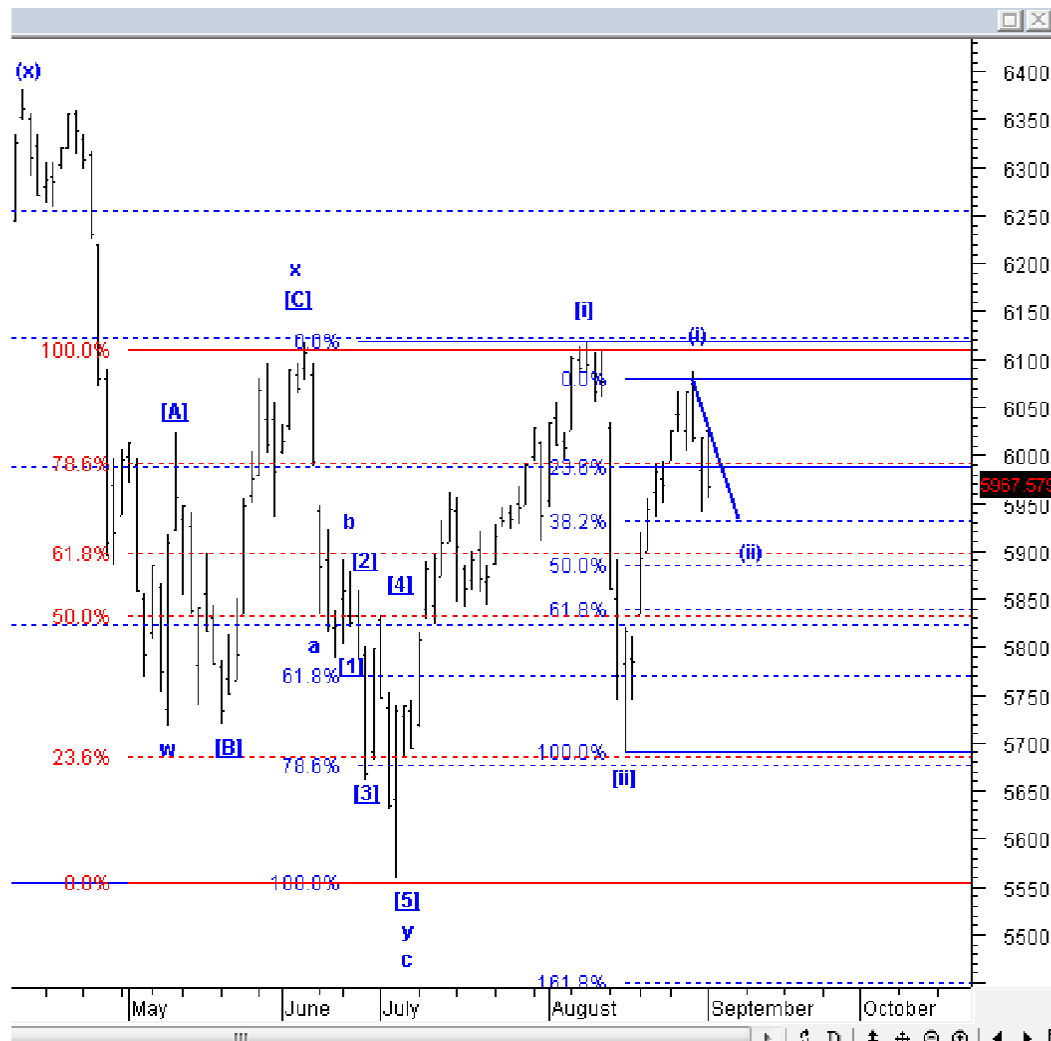


# Elliottician Overview

- Jakarta Composite Index *Elliott Wave Perspective*
  - *Short Term View (1-2 days): Bullish*
- *Stocks Recommendation for Today*
  - TLKM; *Buy on weakness – Buy area 3400-3350; TP 3600, 3780, 3890, 4100; SL 3270*
  - ASII; *Buy on weakness – Buy area 6900-7000; TP 7500, 8000; SL 6600*
  - CPIN; *Buy on weakness – Buy area 4540-4600; TP 5000, 5500, 6000; SL 4400*
  - LSIP; *Sell on strength – Sell area 1330-1350; Downside target 1290, 1220*
  - ERAA; *Sell on strength – Sell area 2520-2540; Downside target 2300, 2230, 1960*

# Jakarta Composite Index

## Elliott Wave Perspective



Rupiah kemarin melemah dan ditutup di level 5905, *lowest* IHSG kemarin sempat mencapai 5889, yang artinya target minimal dari *wave c* dari *wave (ii)* IHSG sudah tercapai. Tetapi, seperti yang kami sebutkan kemarin, IHSG idealnya masih akan turun menuju 5810-5830. Ketika IHSG sudah mencapai area tersebut, IHSG baru bisa dikatakan sudah *bottoming* atau sudah berada di akhir *downtrend* jangka pendeknya.

Support : 5890, 5811

Resisten : 5985, 6100, 6117

# Stock Recommendation for Today

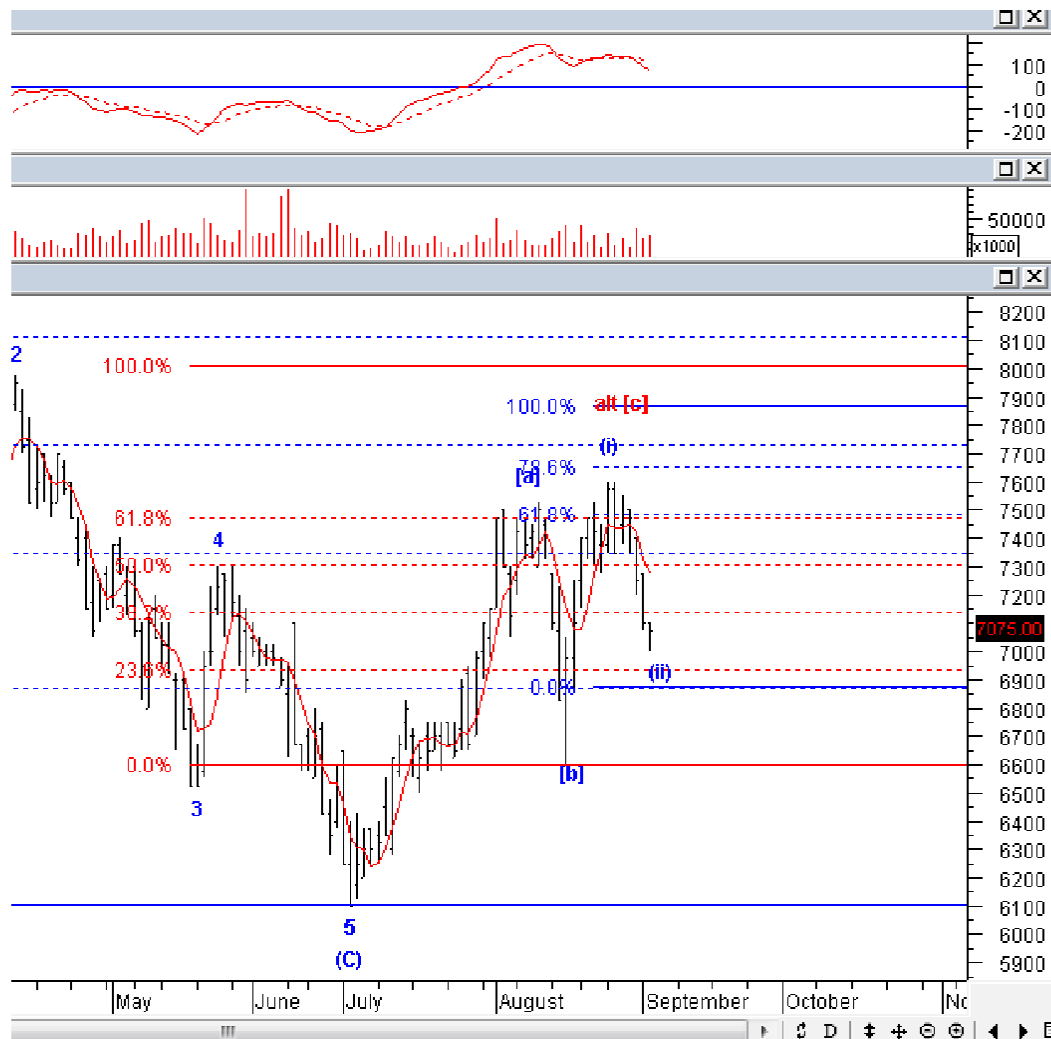
**TLKM:** Buy on weakness – Buy area 3400-3350; TP 3600, 3780, 3890, 4100; SL 3270



TLKM harusnya sebentar lagi akan mencapai target ideal dari wave (c) dari wave [ii]. Silakan akumulasi TLKM hanya jika TLKM turun ke area yang kami rekomendasikan. Harusnya penurunan TLKM akan berhenti di area tersebut.

# Stock Recommendation for Today

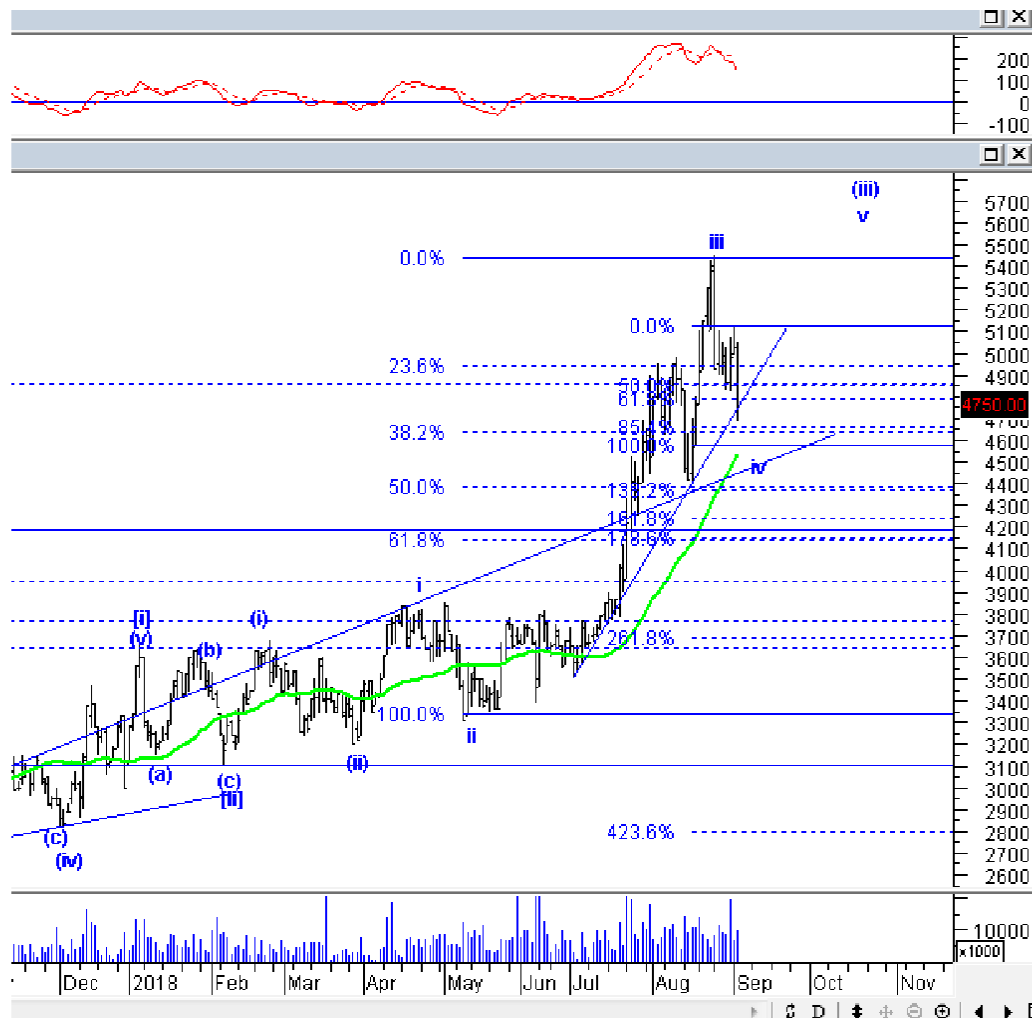
**ASII:** Buy on weakness – Buy area 6900-7000; TP 7500, 8000; SL 6600



ASII sudah masuk area beli dan target ideal dari wave (ii). Silakan BoW ASII, harusnya koreksi ASII mulai terbatas.

## Stock Recommendation for Today

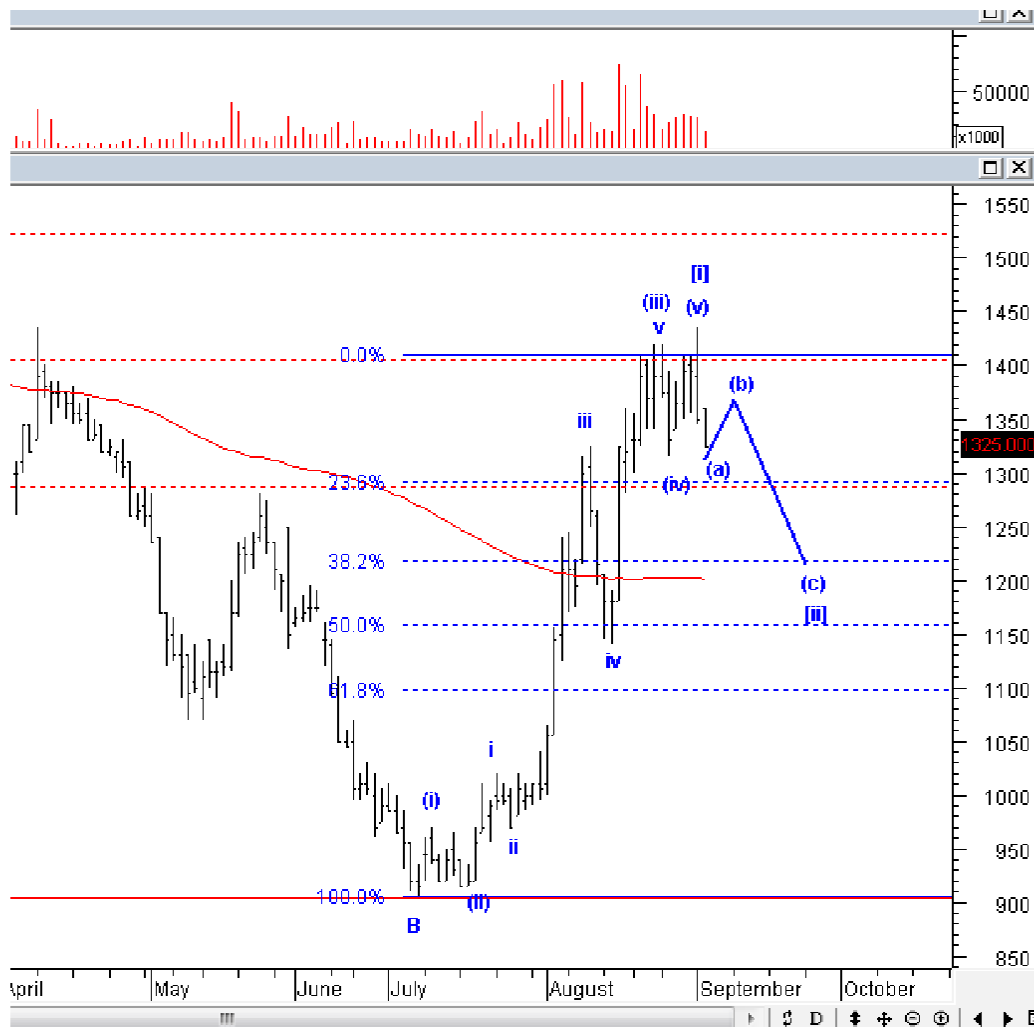
**CPIN:** *Buy on weakness – Buy area 4540-4600; TP 5000, 5500, 6000; SL 4400*



CPIN harusnya sudah masuk ke *wave* [C] dari *wave* iv, memang masih ada *downside*, tetapi relatif sudah mulai terbatas. Kami sarankan untuk mulai melakukan akumulasi beli pada CPIN jika CPIN turun ke bawah 4610.

# Stock Recommendation for Today

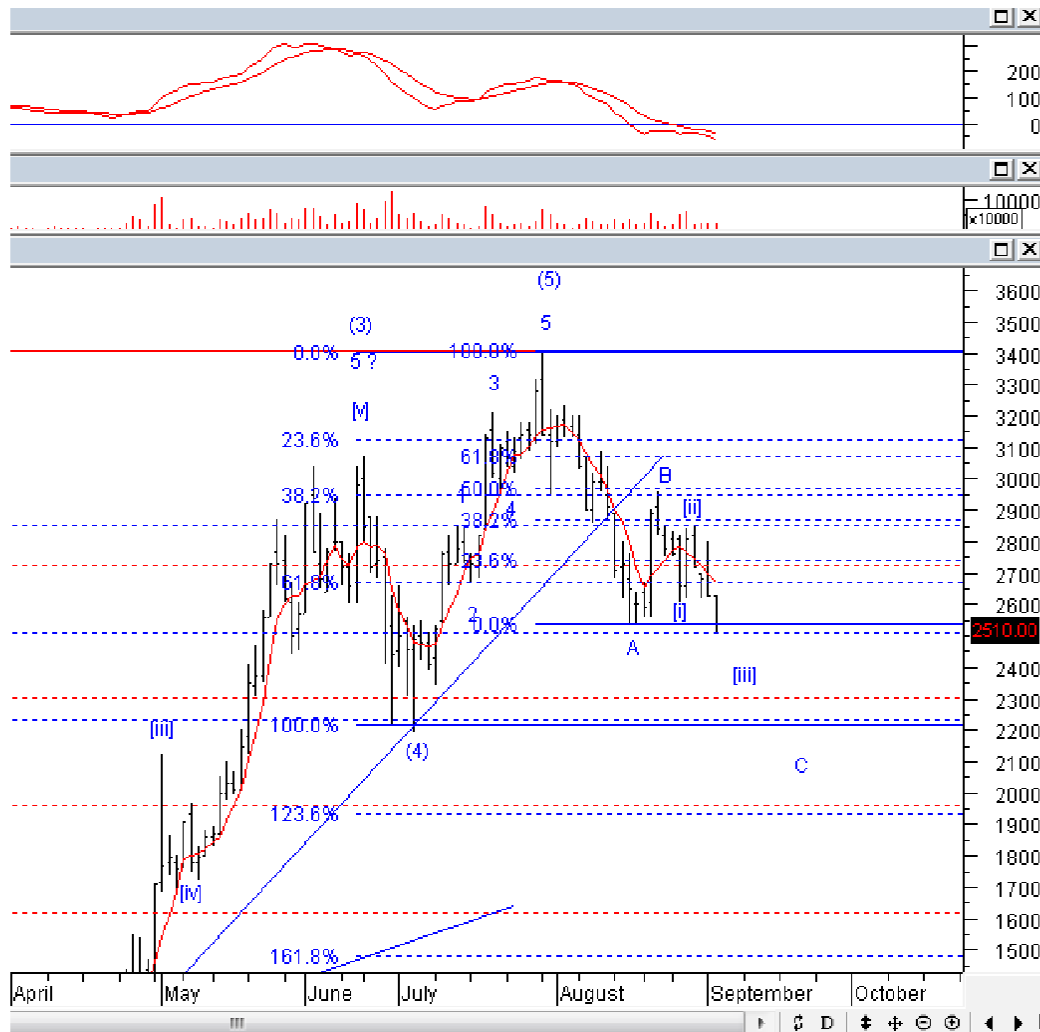
**LSIP:** *Sell on strength – Sell area 1330-1350; Downside target 1290, 1220*



LSIP saat ini sudah konfirm berada di wave (a) dari wave [ii], downside masih cukup jauh, kami sarankan untuk SoS LSIP jika LSIP naik membentuk wave (b).

# Stock Recommendation for Today

**ERAA:** *Sell on strength – Sell area 2520-2540; Downside target 2300, 2230, 1960*



ERAA saat ini sudah konfirm masuk ke wave [iii] dari wave C, artinya ERAA akan turun menuju 2200-2300. Silakan SoS ERAA.



**PT NISP Sekuritas**  
**OCBC NISP Tower Lt. 21 (Head Office)**  
Jl. Prof. Dr. Satrio Kav. 25  
Jakarta 12940 Indonesia  
Phone. (021) 2935 2788 (hunting)  
Fax. (021) 5794 4095  
Email: [info@nispsekuritas.com](mailto:info@nispsekuritas.com)  
Website: [www.nispsekuritas.com](http://www.nispsekuritas.com)

<b>Branches</b>	<b>Address</b>	<b>Phone:</b>	<b>Fax:</b>
<b>Pluit Jakarta</b>	Ruko Sentra Bisnis Blok C28 Jl. Pluit Sakti Raya No. 15 Jakarta Utara 14450	(021) 6667 5050 (hunting)	(021) 6667 5051

### **Rating Definitions**

- Buy on Weakness (BoW) : We expect this stock could be bought below the last price.  
Trading Buy : We expect this stock could be bought at the last price.  
Sell on Strength (SoS) : We expect this stock could be sold above the last price.  
Trading Sell : We expect this stock could be sold at the last price.

### **DISCLAIMER**

This report was produced by PT NISP Sekuritas, a member of the Indonesia Stock Exchange (IDX). The Information contained in this report has been obtained from public sources believed to be reliable and the options, analysis, forecasts, projections and expectations contained in this report are based on such information and are expressions of belief only. No representation or warranty, express or implied, is made that such information or opinion is accurate, complete or verified and it should not be relied upon as such. This report is provided solely for the information of clients of PT NISP Sekuritas who has to make their own investment decisions without reliance on this report. Neither PT NISP Sekuritas nor any officer or employee of PT NISP Sekuritas accept any liability whatsoever for any direct or consequential loss arising from any use of this report or its contents. PT NISP Sekuritas may be involved in transactions contrary to any opinions herein to make markets, or have positions in the securities recommended herein. PT NISP Sekuritas may seek or will seek investment banking or other business relationships with the companies within this report. This report is a copyright of PT NISP Sekuritas. For further information please contact our number 62-21-29352788 or fax 62-21-57944095.