

NISP Daily Elliott Wave Research

5 October 2018

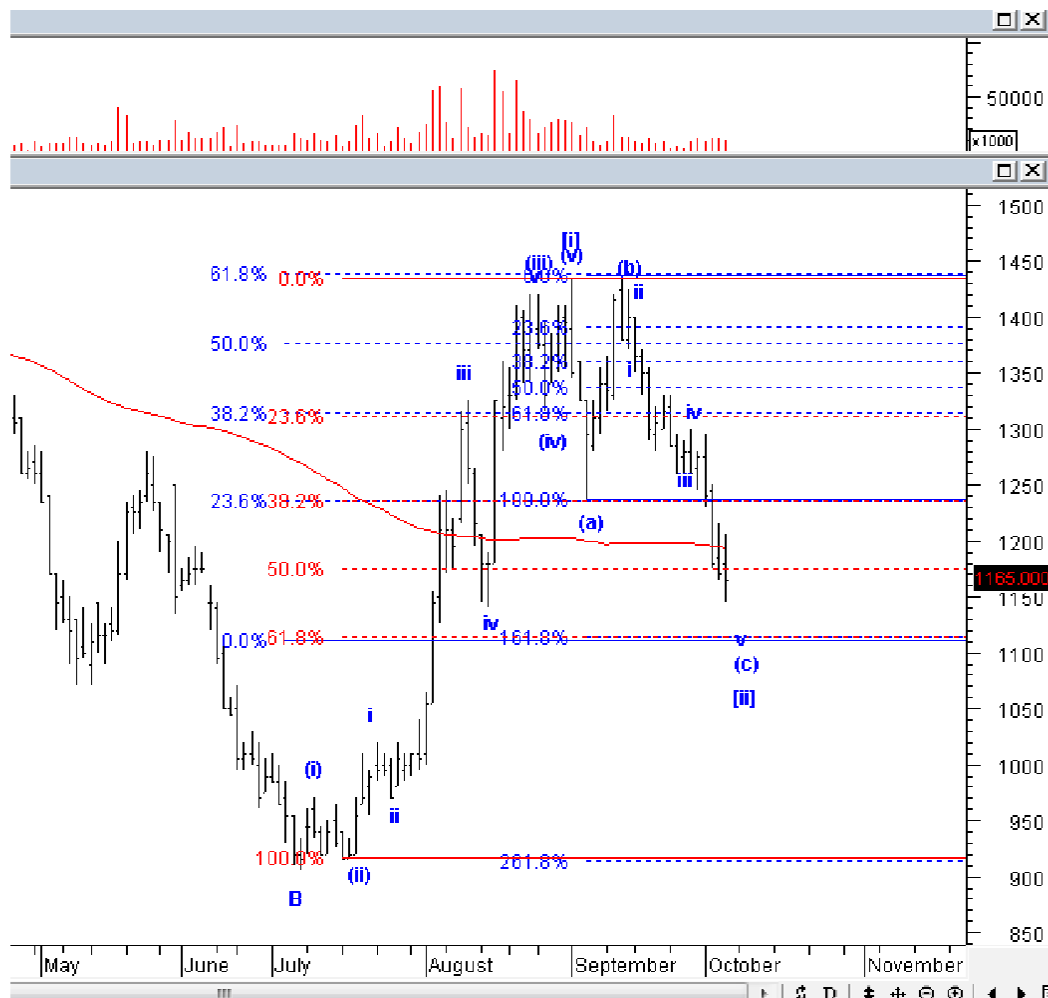


Elliottician Overview

- Jakarta Composite Index *Elliott Wave Perspective*
 - *Short Term View (1-2 days): Bullish*
- *Stocks Recommendation for Today*
 - **LSIP**; *Buy on weakness – Buy area 1130-1150; TP 1240, 1310, 1450, 1500; SL 1100*
 - **KLBF**; *Buy on weakness - Buy area 1260-1280;TP 1350, 1400, 1450; SL 1230*
 - **INTP**; *Buy on weakness - Buy area 15000-15500;TP 16600, 17500, 19500; SL 14300*
 - **BMRI**; *Trading sell; Sell at any price; Downside target 5600-5700, 5300*
 - **HOKI**; *Sell on strength; Sell area 835-845; Downside target 735, 650*

Stock Recommendation for Today

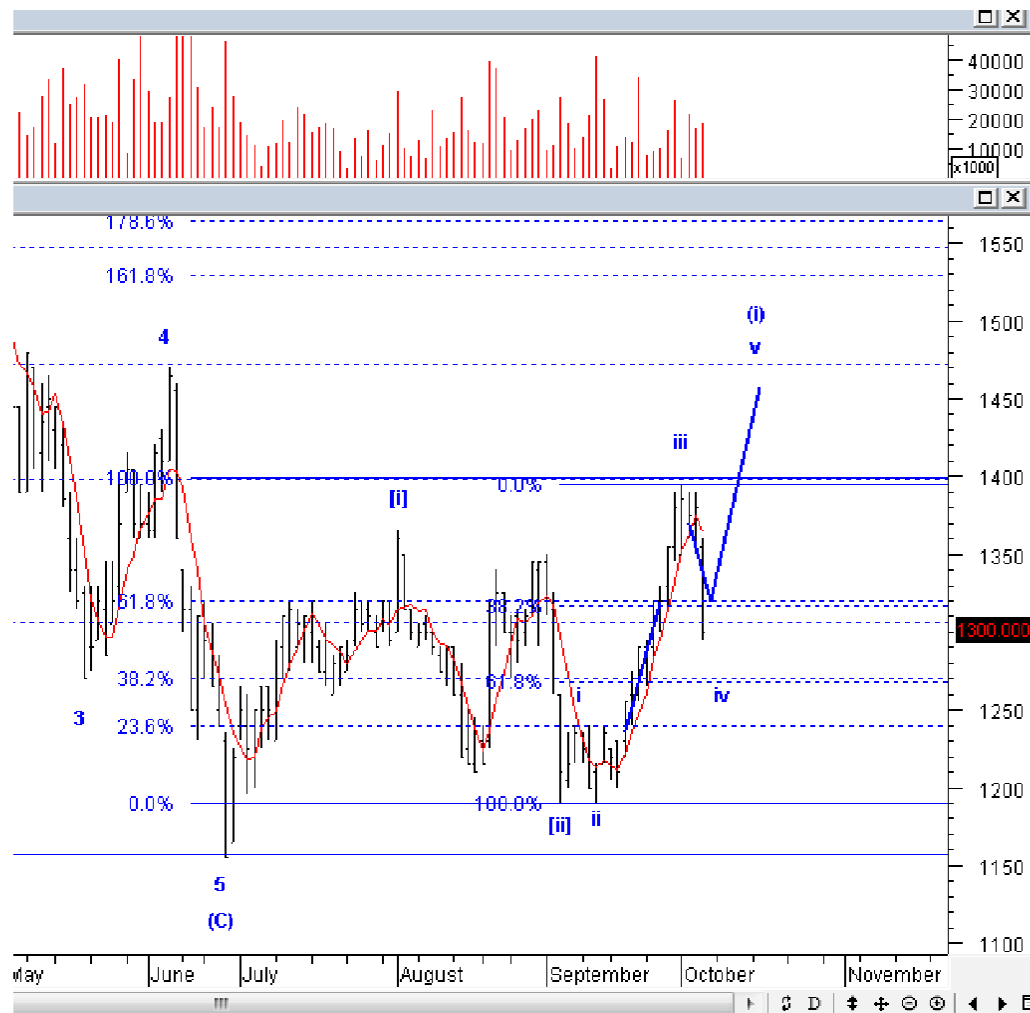
LSIP: Buy on weakness – Buy area 1130-1150; TP 1240, 1310, 1450, 1500; SL 1100



LSIP kemarin memang masih terkoreksi, tetapi koreksi LSIP adalah bagian dari wave v dari wave (c) dari wave [ii], selama LSIP tidak turun ke bawah 1100. Jika LSIP turun ke bawah 1100, LSIP tetap berada di wave (c) dari wave [ii], hanya saja LSIP akan mengalami overshoot turun hingga level 1000-1050. Oleh karena itu batasi resiko dengan menjaga level stoplossnya.

Stock Recommendation for Today

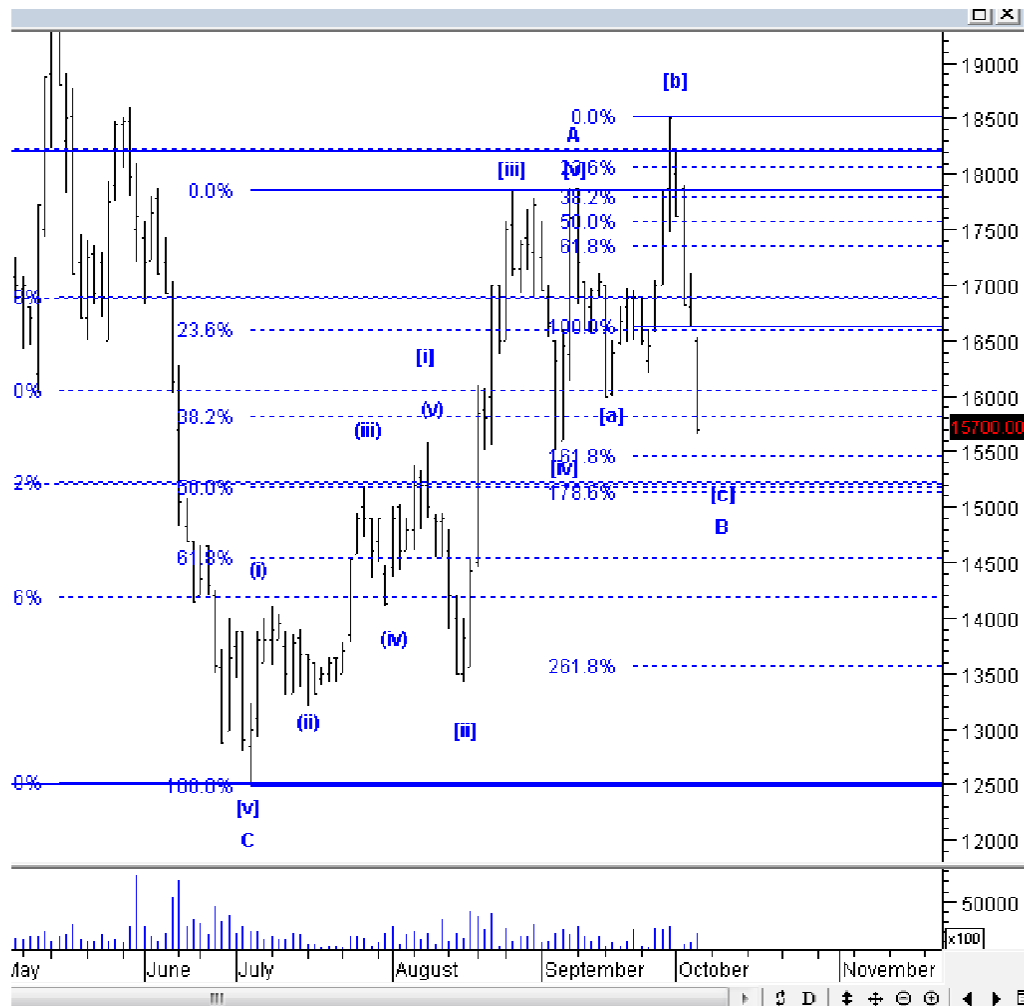
KLBF: *Buy on weakness - Buy area 1260-1280; TP 1350, 1400, 1450; SL 1230*



KLBF pernah kami rekomendasikan SoS pada tanggal 3 Oktober, dan hari ini kami rekomendaikan untuk BoW atau *buyback* pada KLBF, karena harusnya KLBF sudah hampir selesai terkoreksi membentuk wave iv dari wave (i). Silakan BoW KLBF.

Stock Recommendation for Today

INTP: Buy on weakness - Buy area 15000-15500; TP 16600, 17500, 19500; SL 14300



INTP beberapa kali kami rekomendasikan SOS sejak masih di level 17500an ke atas. Kemarin INTP ditutup terkoreksi agresif di level 15700, yang ini menunjukkan bahwa INTP sudah berada di wave [c] dari wave B. Kami pagi ini merekomendasikan BoW INTP, mengingat harusnya INTP sudah berada di akhir koreksinya. Perhatikan level stoplossnya.

Stock Recommendation for Today

HOKI: *Sell on strength; Sell area 835-845; Downside target 735, 650*



HOKI kemarin terkoreksi dengan volume besar, dan posisi HOKI saat ini sedang berada di wave {C}. Kami memperkirakan HOKI masih akan terkoreksi lagi. Silakan SoS dan hindari untuk membeli HOKI terlebih dahulu.

PT NISP Sekuritas
OCBC NISP Tower Lt. 21 (Head Office)
Jl. Prof. Dr. Satrio Kav. 25
Jakarta 12940 Indonesia
Phone. (021) 2935 2788 (hunting)
Fax. (021) 5794 4095
Email: info@nispsekuritas.com
Website: www.nispsekuritas.com

Branches	Address	Phone:	Fax:
Pluit Jakarta	Ruko Sentra Bisnis Blok C28 Jl. Pluit Sakti Raya No. 15 Jakarta Utara 14450	(021) 6667 5050 (hunting)	(021) 6667 5051

Rating Definitions

- Buy on Weakness (BoW) : We expect this stock could be bought below the last price.
Trading Buy : We expect this stock could be bought at the last price.
Sell on Strength (SoS) : We expect this stock could be sold above the last price.
Trading Sell : We expect this stock could be sold at the last price.

DISCLAIMER

This report was produced by PT NISP Sekuritas, a member of the Indonesia Stock Exchange (IDX). The Information contained in this report has been obtained from public sources believed to be reliable and the options, analysis, forecasts, projections and expectations contained in this report are based on such information and are expressions of belief only. No representation or warranty, express or implied, is made that such information or opinion is accurate, complete or verified and it should not be relied upon as such. This report is provided solely for the information of clients of PT NISP Sekuritas who has to make their own investment decisions without reliance on this report. Neither PT NISP Sekuritas nor any officer or employee of PT NISP Sekuritas accept any liability whatsoever for any direct or consequential loss arising from any use of this report or its contents. PT NISP Sekuritas may be involved in transactions contrary to any opinions herein to make markets, or have positions in the securities recommended herein. PT NISP Sekuritas may seek or will seek investment banking or other business relationships with the companies within this report. This report is a copyright of PT NISP Sekuritas. For further information please contact our number 62-21-29352788 or fax 62-21-57944095.